

surgery

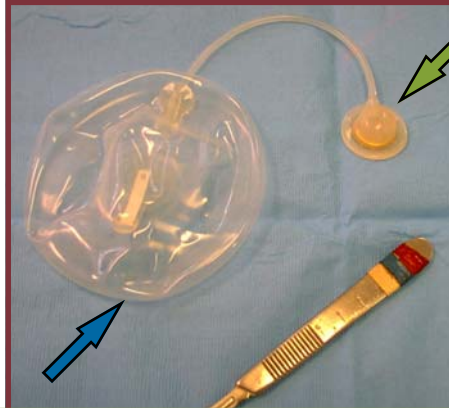
internal medicine

emergency & critical care

dermatology

radiology, ultrasound & CT scan

Tissue Expansion & Tissue Flap Surgery



200 ml Tissue Expander (blue)
- pre-implantation -
Sequential injections of sterile saline into the injection port (green) will gradually fill the expander (blue) and stretch the skin over the area of implantation.

Immediate postop view showing expander (blue) beneath the skin just above the malignant tumor (red) that will be removed. The injection port (green) is located at the top of the incision.



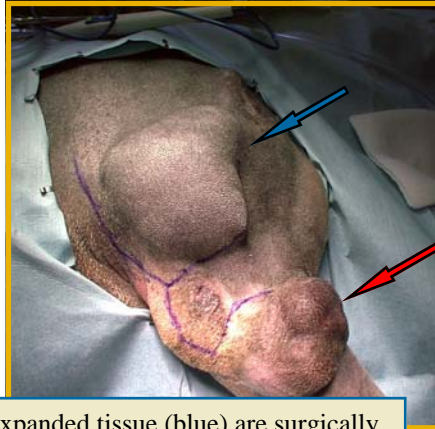
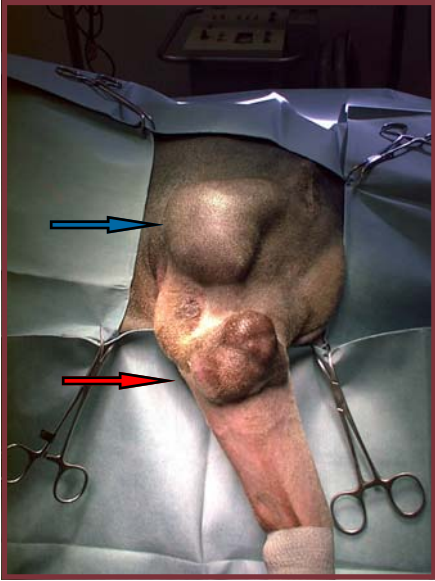
7 day postop view showing progressive expansion of tissue over the expander (blue) with tumor below (red).



Injection of sterile saline into the injection port (green) is a relatively painless experience for all parties involved. The port was injected every other day with 25 ml of fluid to slowly fill the expander and stretch the skin. Total expansion time was two weeks and 175 ml.



Surgical procedure—tumor removal and flap rotation on back.



The malignant tumor (red) and area of expanded tissue (blue) are surgically prepped and draped off in preparation for excision of the tumor and rotation of a tissue flap using the expanded tissue.



The tumor is excised leaving a large defect that could not otherwise be closed without the use of some form of a tissue flap.



The tissue expander is removed and a rotation flap is created, elevated, and rotated to fill the defect. Use of the expanded tissue allows for a tension free flap and complete defect coverage. A drain is placed to prevent fluid accumulation in the immediate postoperative period.



12 week postoperative view showing complete healing of the flap and re-growth of the hair.

WHEAT RIDGE OFFICE

3695 Kipling St., Wheat Ridge, CO 80033
Tel 303-940-1239 • Fax 303-420-8360

WESTMINSTER OFFICE

945 W 124th Av, Westminster, CO 80234
Tel 303-350-4733 • Fax 303-350-4734

BOULDER OFFICE

1658 30th ST, Boulder, CO 80301
Tel 720-974-5802 • Fax 303-440-0649