



Wheat Ridge Veterinary Specialists

• EXPERTISE YOU CAN TRUST •

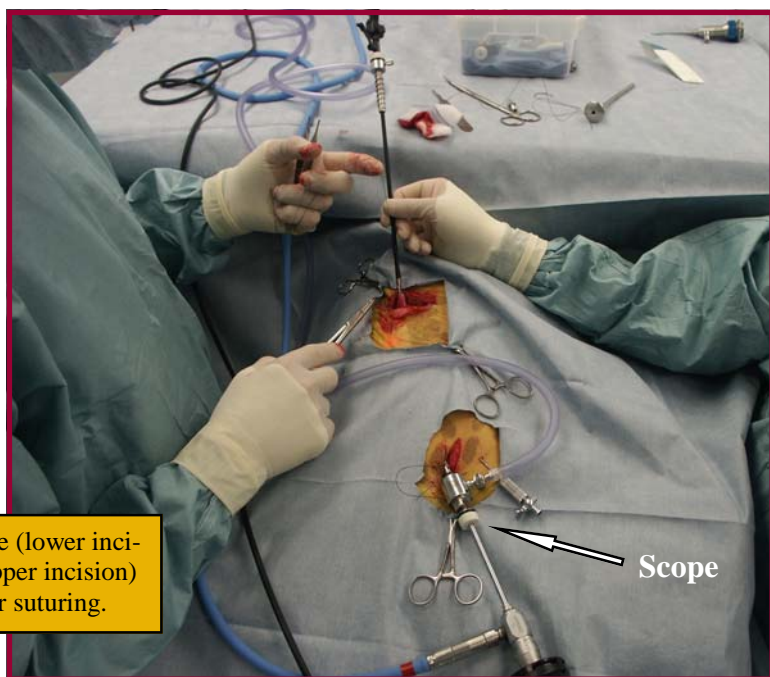
Laparoscopic Gastropexy

Δ GDV / TORSION / BLOAT: Gastric Dilatation & Volvulus (GDV) has been, and continues to be, a common life threatening and often fatal condition of large and giant breed dogs. The most at risk breeds include: Great Dane, St. Bernard, Blood Hound, Weimaraner, Boxer, and German Shepard Dog. Studies report that the likelihood of a large or giant breed dog developing a GDV is approximately **25%**. However, high risk dogs such as the Great Dane have approximately a **45%** chance of developing a GDV. Once a GDV occurs, surgery is the treatment of choice but even with immediate, and successful surgery, mortality with GDV has been reported to be approximately 30%. Without surgery, GDV is 100% fatal. Prevention is a far better alternative.

Δ LAPAROSCOPIC GASTROPEXY: This procedure is a *minimally invasive* means by which to permanently pexy (secure) the stomach to the abdominal wall in such a manner that future gastric volvulus or torsion is prevented. Minimally invasive surgical techniques allow the surgeon to perform major operations through minimal surgical incisions. Through the use of a 5 mm fiberoptic scope (1/4 inch scope) and a 2 cm incision (1 inch) just behind the umbilicus (belly button), the surgeon is able to completely evaluate the abdomen and look for any abnormalities. Through a second 2 cm incision just behind the rib cage on the right side, the surgeon passes a small grasping instrument, and while watching on the monitor through the previously placed scope, locates and grasps a portion of the stomach. This section of the stomach is then sutured to the abdominal wall to achieve the pexy. The stomach is now permanently secured in place and cannot flip or twist in the future. Previously, this type of procedure required a major operation with a large and painful abdominal incision. Minimally invasive laparoscopy allows the surgeon to achieve the same outcome with only two very small, and minimally painful, incisions. The patient recovers faster, with minimal postoperative discomfort, and can often go home the same day as the procedure.



Preoperative view showing patient positioning for the procedure. The small square boxes indicate the location of the two incisions that will be made to complete the procedure.



Intraoperative view showing the scope (lower incision) and the grasping instrument (upper incision) holding the stomach in preparation for suturing.

WHEAT RIDGE OFFICE

3695 Kipling St., Wheat Ridge, CO 80033
Tel 303-940-1239 • Fax 303-420-8360

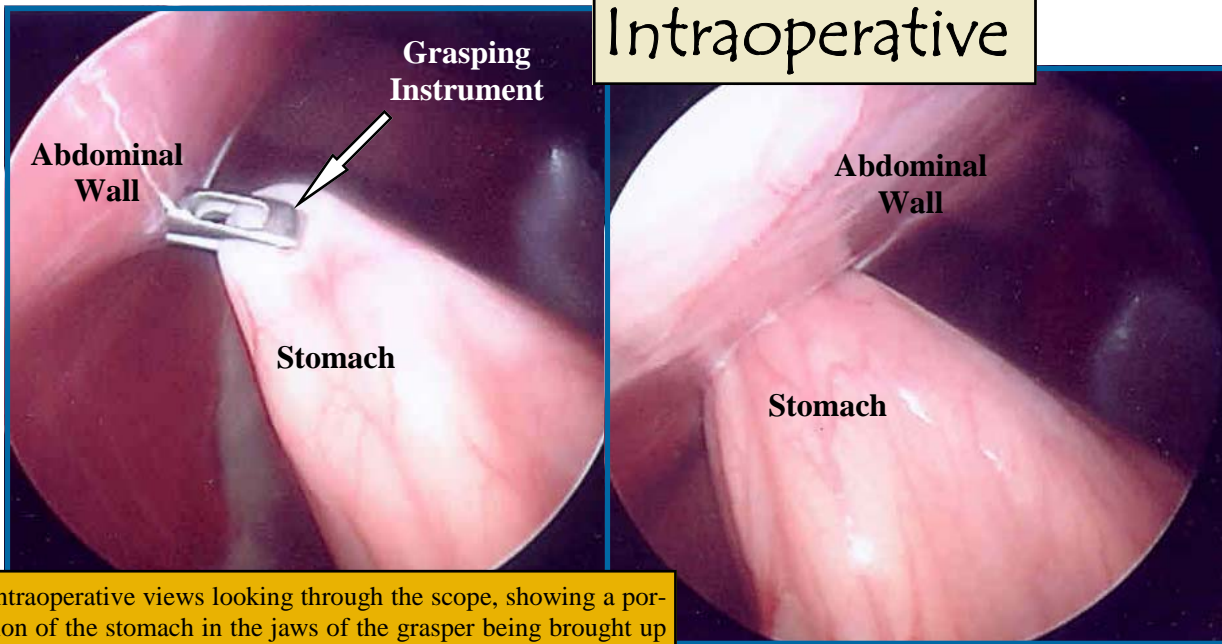
WESTMINSTER OFFICE

945 W 124th Av, Westminster, CO 80234
Tel 303-350-4733 • Fax 303-350-4734

BOULDER OFFICE

1658 30th ST, Boulder, CO 80301
Tel 720-974-5802 • Fax 303-440-0649

Intraoperative



Intraoperative views looking through the scope, showing a portion of the stomach in the jaws of the grasper being brought up to the abdominal wall for pexy. The pexy attaches the stomach to the abdominal wall in a permanent manner thus preventing it from flipping or twisting in the future.

Postoperative



Postoperative view showing the two small incisions (within the boxes) that are left following the procedure. Patients have minimal postoperative pain or discomfort and are often able to go home the same day.

The surgeons at Wheat Ridge Veterinary Specialists are board certified in small animal surgery and have extensive experience and skill in the techniques of laparoscopic surgery. Our nursing team and support staff are highly talented and committed to patient care and excellent outcomes.

WHEAT RIDGE OFFICE

3695 Kipling St., Wheat Ridge, CO 80033
Tel 303-940-1239 ● Fax 303-420-8360

WESTMINSTER OFFICE

945 W 124th Av, Westminster, CO 80234
Tel 303-350-4733 ● Fax 303-350-4734

BOULDER OFFICE

1658 30th ST, Boulder, CO 80301
Tel 720-974-5802 ● Fax 303-440-0649